

UtilityScan by GSSI

Nondestructive Location of Metallic & Non-Metallic Utilities Under Ground

#1
Utility
Locating
System



UtilityScan Benefits

- Easy to use system for quick surveys
- Instant 3D data collection
- Locate non-traceable utilities in real time
- Rugged & affordable integrated system
- High-definition, full-color screen that is easy to read, even in daylight
- Locate & mark utilities quickly and accurately with GSSI's backup cursor feature
- Collapsible, versatile and lightweight system



The World Leader in
Subsurface Imaging™

Geophysical Survey Systems, Inc.
www.geophysical.com

World's #1 Utility Locating System from GSSI

At the core of the UtilityScan system is SIR-3000, the powerful control unit from GSSI. SIR-3000 is the result of GSSI's 35 years as the world leader in Ground Penetrating Radar (GPR) research and development.

This revolutionary control system is the first to incorporate a full-color interface for clear, easy to read data images, a removable compact flash data memory for easy transfer of data, an internal sealed battery compartment, and a hardened metal casing. These unique qualities make UtilityScan both expandable and durable.



UtilityScan Integrated System

- Lightweight and portable
- Real time data display
- Back up cursor allows you to accurately define targets
- Unsurpassed data quality: You can trust your results with GSSI's powerful antennas
- Durable components tested for use in the toughest field conditions
- Convertible cart for 2- or 3-wheel use
- Ability to save data to a flash card
- Optional GPS system is fully integrated
- Built with pride in the USA
- FCC approved

Utilityscan - 400 MHz

Center Frequency:	400 MHz
Depth Range:	0 - 4 m (0 - 12 ft)
Dimensions:	30 x 30 x 17 cm (12 x 12 x 6.5 in)
Antenna Weight:	5 kg (11 lbs)

Shallow Penetration - Highest Resolution

UtilityScan 400 MHz is ideally suited for detection and mapping of utility pipes, as well as shallow engineering and environmental applications.

- Locate buried utilities, drums and underground storage tanks
- Identify depth and location of objects of all construction materials, i.e., concrete pipes, plastic drums, fiberglass tanks
- Identify voids under man-made structures such as roads, runways and buildings

Utilityscan - 270 MHz

Center Frequency:	270 MHz
Depth Range:	0 - 6 m (0 - 18 ft)
Dimensions:	45 x 45 x 17 cm (18 x 18 x 6.5 in)
Antenna Weight:	8.6 kg (18.5 lbs)

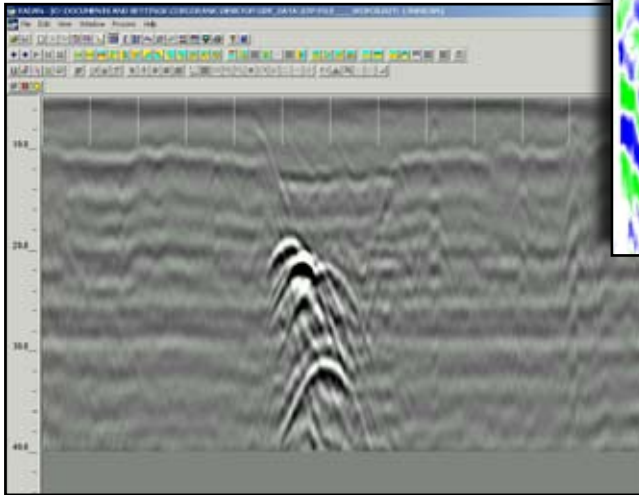
Deeper Penetration - High Resolution

UtilityScan 270 MHz is ideally suited for deeper (down to 6 m) utility, engineering and geotechnical applications.

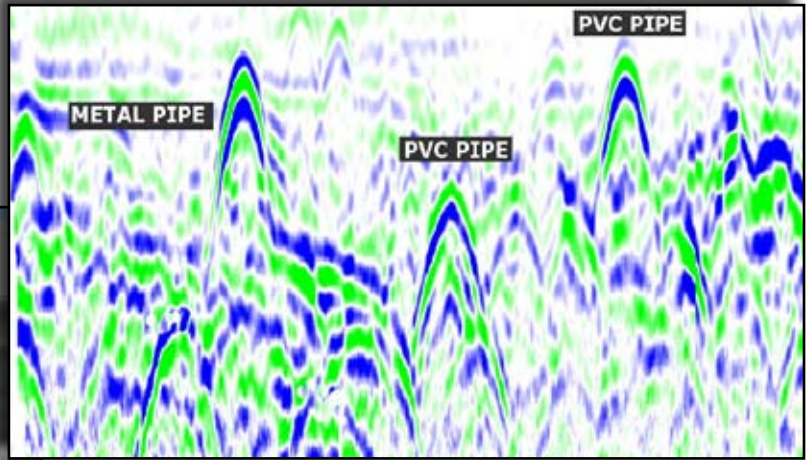
- Locate buried utilities, drums and underground storage tanks
- Identify depth and location of objects of all construction materials (pipes, drums, tanks)
- Identify voids under man-made structures such as roads, runways and buildings
- Locate utilities and other man-emplaced targets to deeper depths

UtilityScan Data

UtilityScan's exceptional data quality, combined with full color viewing, lets you locate utilities easily and accurately.



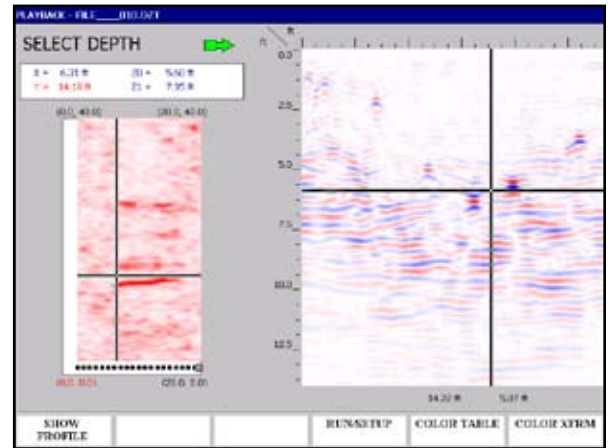
UtilityScan data showing four pipes grouped in a trench



UtilityScan data depicting metallic and non-metallic utilities

Quick 3D Data

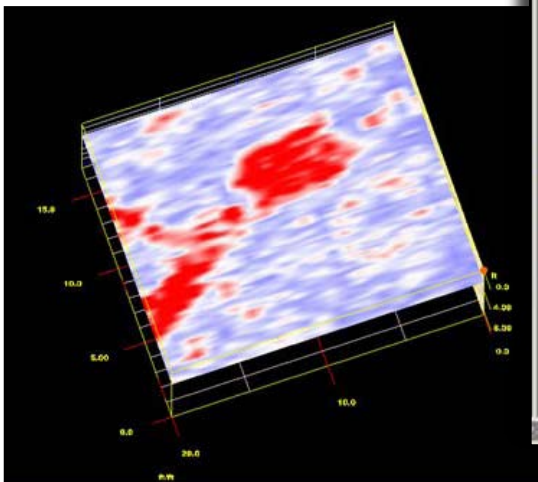
GSSI's state-of-the-art UtilityScan system allows you to collect 3D data in real time. Quick 3D allows users the option of looking at 3D data automatically instead of waiting to view data in our software program RADAN.



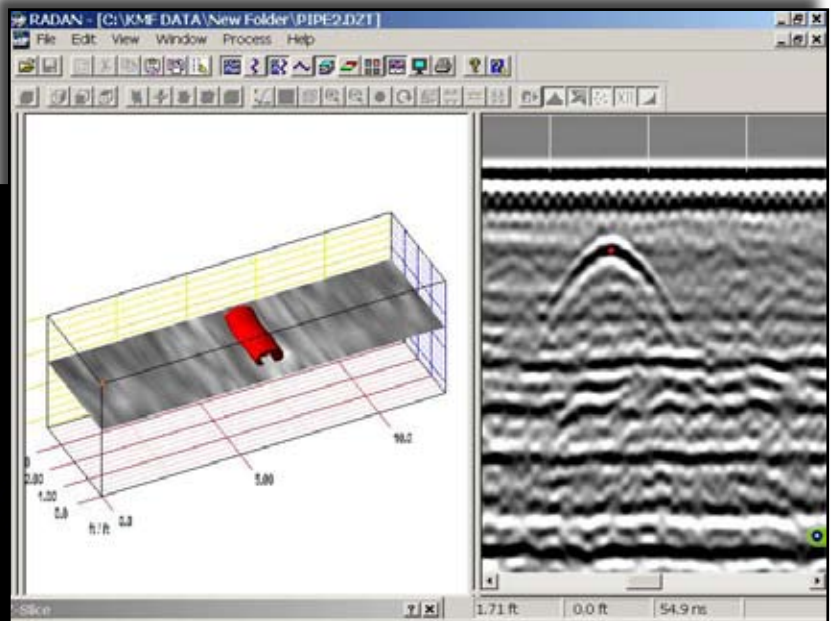
Utilities pinpointed in Quick 3D

Software

GSSI's RADAN 6.0 and 3D QuickDraw software takes a step forward from the traditional two-dimensional viewing method. Three-dimensional visualization helps you to see the whole picture, giving you a powerful tool to interpret complex utility layouts.

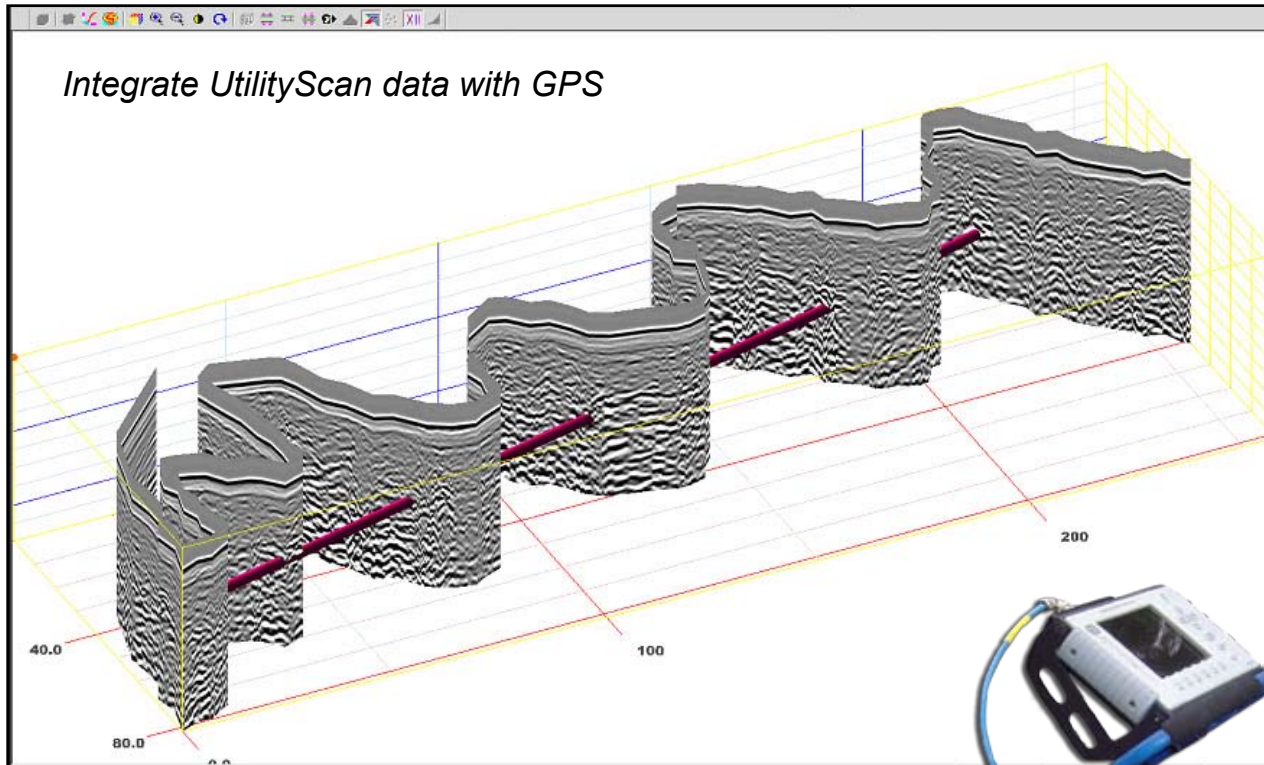


3D view of septic system



Drain pipe under rebar

UtilityScan by GSSI



UtilityScan - 400 MHz System Includes:

- Model 5103 400 MHz Antenna
- GSSI SIR-3000 Data Acquisition System
- Survey Cart with Encoder Wheel
- One 2-Meter Control Cable
- Transit Case

- Two Batteries and Battery Charger
 - AC Adapter
 - User Manual
 - Sun Shade



UtilityScan - 270 MHz System Includes:

- Model 5104 270 MHz Antenna
- GSSI SIR-3000 Data Acquisition System
- Survey Cart with Encoder Wheel
- One 2-Meter Control Cable
- Transit Case
- Two Batteries and Battery Charger
- AC Adapter
- User Manual
- Sun Shade



Geophysical Survey Systems, Inc.
www.geophysical.com

12 Industrial Way
Salem, NH 03079-4843
Tel: (603) 893-1109 Fax: (603) 889-3984
Sales@Geophysical.com