

Measured Building Survey

LandScope Engineering provides a measured building survey service to complement our topographic survey and 3D laser scanning capability. This embodies our ethos of providing complete integrated survey packages.

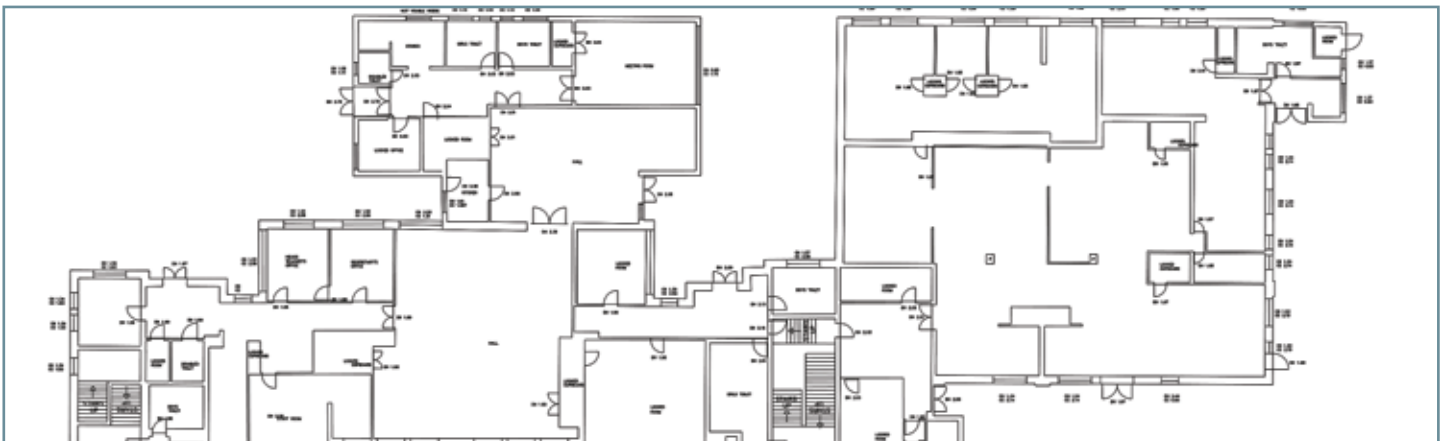
Our sophisticated reflectorless total stations and laser scanning capabilities can provide for all your external elevation and internal modelling needs. The use of industry standard MBS Floorplans software enables the real-time creation of floor plans by single person survey teams, bringing greater efficiencies to data collection and processing. The integration of these technologies enables the transfer of external datums throughout the interior of the building, creating a survey that is both cohesive and meaningful.

2D Floor Plans and Elevations



Applications include:

- 2D Floor Plans
- 2D Elevation Drawings
- 3D Building Infrastructure Models
- Structural Deformation Monitoring
- Marketing Visualisation '3D Walk Through'
- Building Information Modelling (BIM)





3D and Building Information Modelling (BIM)

In combining laser scanner data with our extensive measured buildings survey experience we can put together a complete package for your building survey requirements. Operable in either an outdoor or indoor environment the system enables an incredible amount of high order accuracy data capture in a fraction of the traditional instrumentation time. Augmentation of high resolution photographic images to the data-set allows unambiguous point picking with the reassurance that those costly site re-visits due to missing details will now be a thing of the past. Without the need to create detailed time consuming and expensive 3D CAD models, the surveyor or end-user has the capability to extract vector distances, create 2D plans or elevations or cross sections directly from the measurement domain, which in this case is a three dimensional point cloud.

The outside-in approach means LandScope can provide you with any additional geospatial visualisation you require including:

- 2D Elevation Drawings
- Section Drawings
- 3D Point Clouds
- 3D Photo-draped Models
- 3D Rendered Models

One of the key benefits of utilising the laser scanning approach is the ability to drape high resolution photographic images into the point cloud data. This enables us to gain further information from the data without costly return field visits.



Related Inserts Available

3D Scanning and Modelling



Land Survey/ Geomatics



Underground Services & Utility Mapping

