

Drainage Mapping and CCTV Survey

LandScope offer a comprehensive drainage mapping and inspection service to meet customer requirements.

Given the established land survey capability within LandScope we ensure that networks are accurately mapped in plan and level in either local or national geo-referenced frameworks.

Applications Include:

- Accurate Line and Level Surveys - Ordnance or other local datum
- Manhole CAD Schedules and Documentation
- Radio-sonde Drainage Alignment Mapping
- Ground Penetrating Radar (GPR) survey of non open and accessible lines - e.g. deeper culverts, rising pumped mains, abandoned drainage
- Electro-Magnetic Location Mapping of Metallic Drainage Systems
- Dye Trace Surveys for network mapping and contaminant pathway determination
- Buried Manhole Location

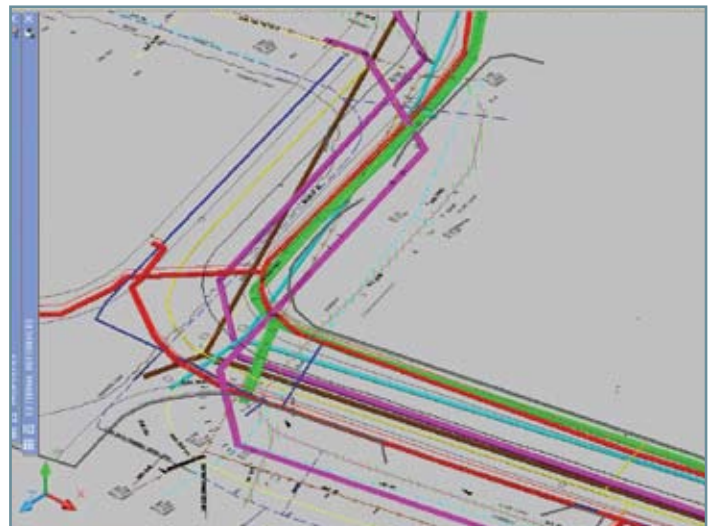
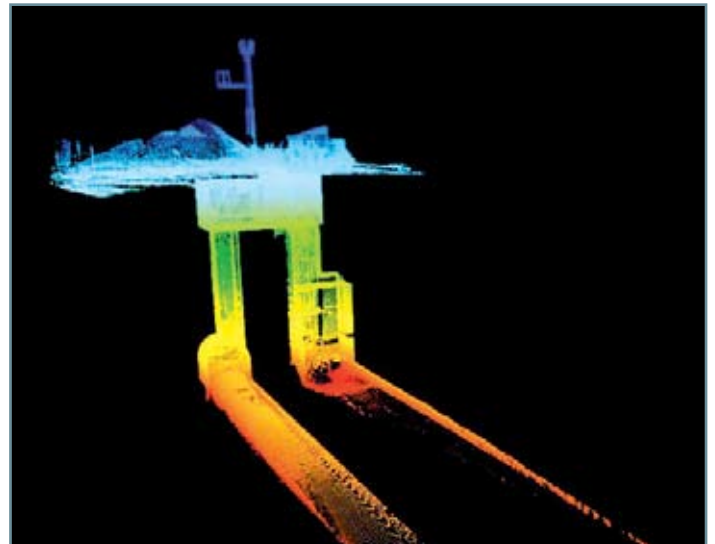


Underground Infrastructure Mapping - Service Conflict Avoidance

LandScope's established underground infrastructure mapping service is often called upon during the design of new drainage systems in order to mitigate the risk of service position conflicts with new alignments. LandScope is able to offer a full 3D visualisation and modelling service to assist in the most complex and congested environments.

Drainage Network Mapping

Utilising a combination of electro-magnetic location (sonde), ground penetrating radar and more traditional dye and acoustic based methods LandScope provides an integrated drainage network mapping service. This may range from a simple line and level survey to a full 3D network configuration over an entire site. Accurate position and level data is provided through the deployment of the latest total station and GNSS survey systems.



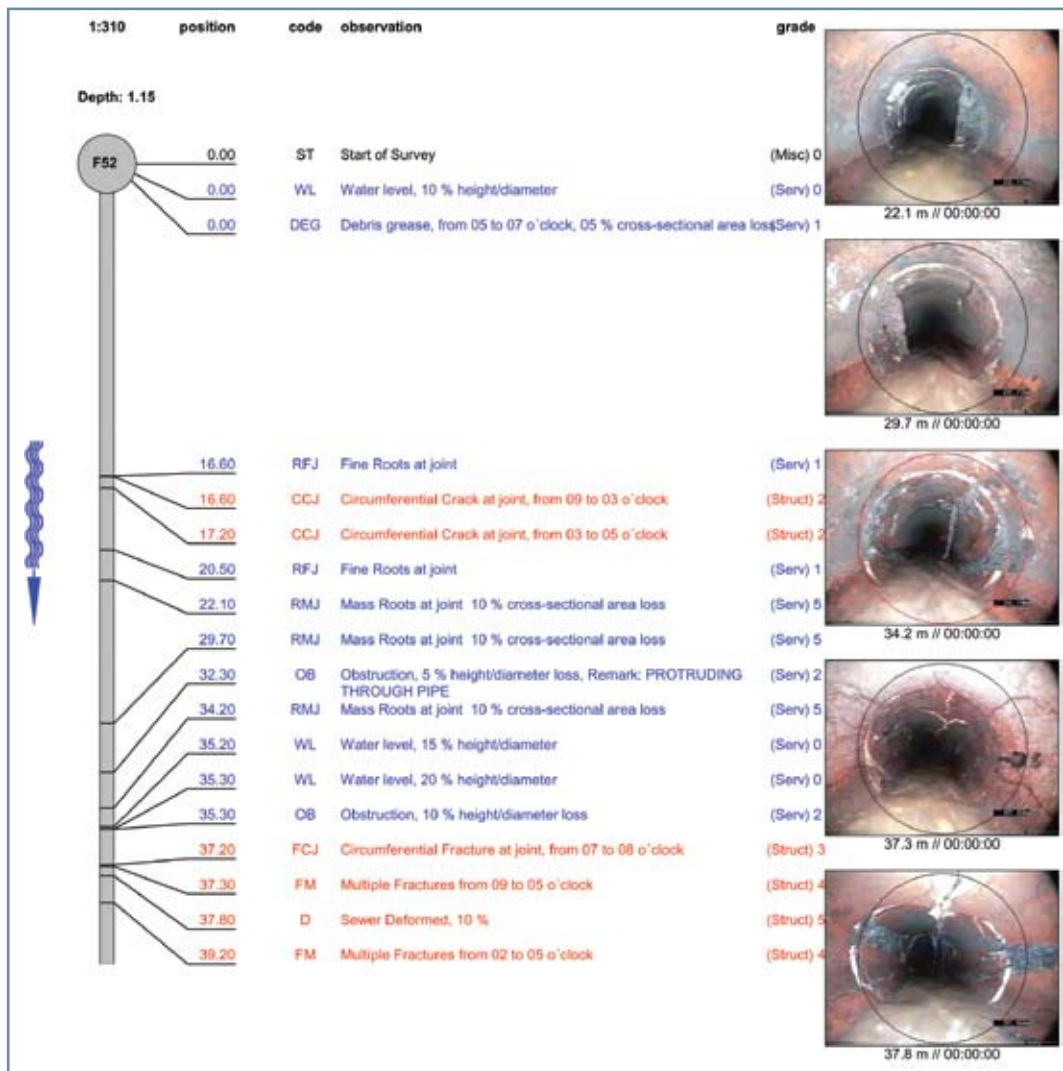
CCTV Surveys

CCTV surveys are supplied in partnership with our rigorously approved specialist providers. LandScope ensures that all CCTV results are referenced and consistent with survey drawings.



- Domestic CCTV units, some now with on-board jetting facilities, capable of surveying 100 - 225mm diameter drainage systems using a small flexible push rod system. Ideal for house and small industrial surveys
- Mini - Mainline CCTV units capable of surveying 100 - 600mm diameter drainage systems incorporating both push rod and mini tractor systems. Ideal for most industrial and commercial surveys
- Mainline CCTV units capable of surveying 100 - 1800mm diameter drainage systems including large tractor unit with "pan and tilt" facility. Length of survey from one access point can be up to 300 metres. Ideal for Water Authority, Municipal contracts and specialist "one-off" surveys

- All levels of survey are carried out by operators trained and qualified to the Water Industry International OS20X standard
- On site input and validation of the survey results is carried out using the latest Wincan CCTV reporting software using on board industrial computers
- Upon completion of the site works, full colour, quality controlled condition reports, site photos and drawings are provided including recommendations for repairs to defects where necessary. The reports are supplied as hard copy and Adobe PDF format
- MPEG video and electronic JPEG images of defects are included as standard with all levels of survey
- We can also supply a free issue Wincan Viewer allowing larger surveys to be archived and video footage viewed on our clients' own computer systems



Related Inserts Available

Land Survey /
Geomatics



Underground
Services & Utility
Mapping



Utility Record
Search &
Compilation



Midlands & Northern Office
Shrewsbury

Southern Office
Romford

South West Office
Plymouth

01694 731930 www.land-scope.com enquiries@land-scope.com