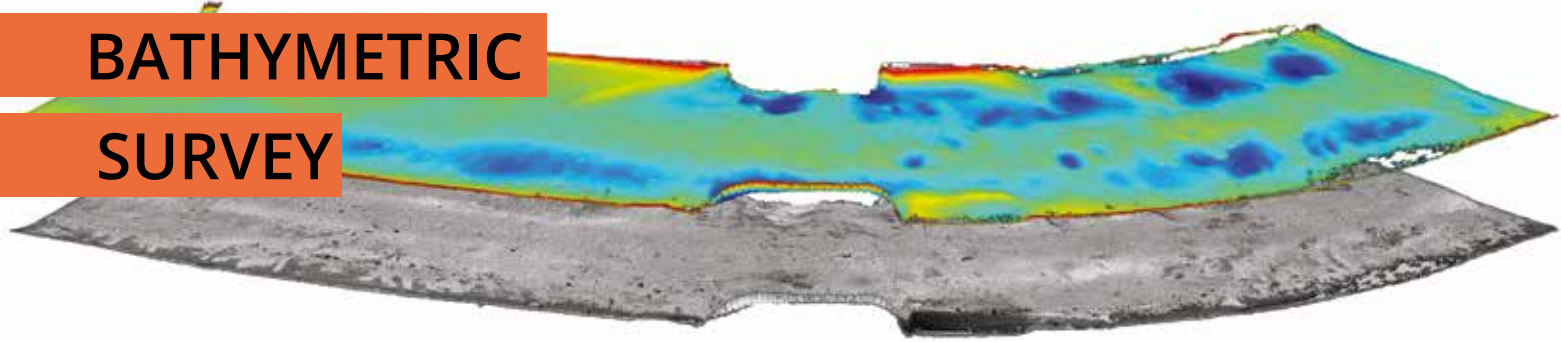


# MULTIBEAM BATHYMETRIC SURVEY



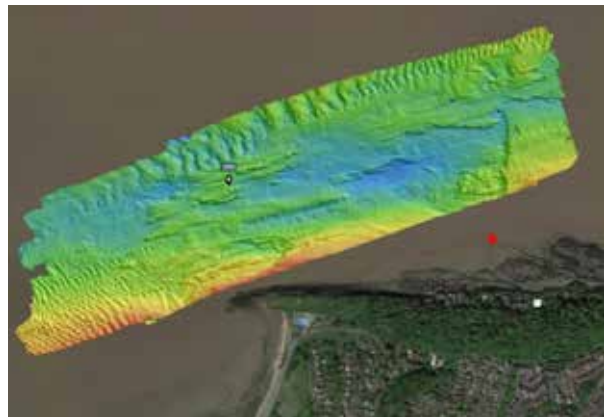
LandScope Engineering has over 30 years of experience undertaking multibeam bathymetric surveys within all environments, from small rivers and lakes to estuaries and coastal waters.

Our in-house experience and expertise, and investment in the latest survey platforms, systems and software packages, allows us to offer multibeam bathymetric resolution and accuracy to IHO specification in all environments, from river intakes, reservoirs, navigable rivers and canals, through to near-shore and coastal environments.

With experience from working in all marine environments, we are highly confident in our ability to deploy the most appropriate vessel and survey resources for your project, which distinguishes us from other hydrographic survey companies.

## MULTIBEAM SYSTEMS

Our survey vessels are equipped with multi-frequency swathe bathymetry for large area coverage, offering an efficient and cost-effective solution for mapping large areas in a single pass of the vessel. Our solutions are based on the latest technology from NORBIT, R2Sonic, Teledyne, Applanix and Beamworx. Our deployment systems are developed with the benefit of extensive multi-environment and multi-application experience.



## EXTENDING ABOVE THE WATERLINE

Our bathymetric surveys can be integrated with terrestrial survey data to provide a seamless 3D model of the above and below water environment. The above water data can be acquired using UAV, terrestrial LiDAR, traditional survey techniques or marine and land-based mobile mapping.



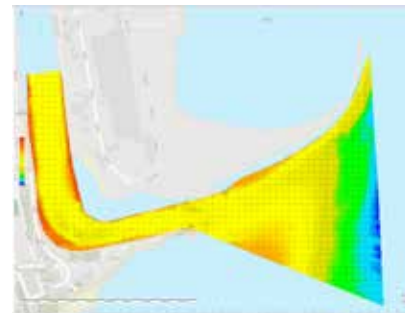
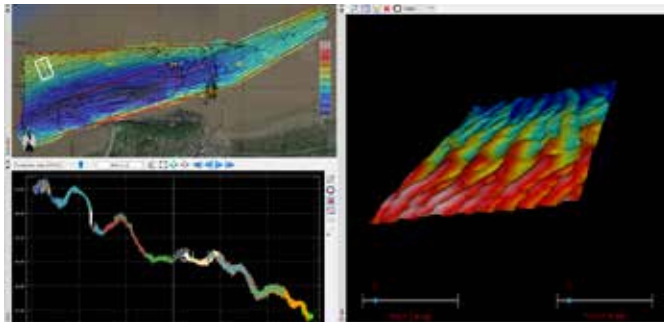
## MULTIBEAM SURVEY PLATFORMS

At LandScope, we consider multibeam bathymetry to be an invaluable resource to projects in all environments. We have configured a range of survey platforms, including unmanned remotely controlled vessels, to accommodate even the most constrained, inaccessible, and challenging survey sites.



## DATA OUTPUTS AND DELIVERABLES

LandScope may deliver bathymetric survey data in a variety of formats to best serve application and end-user requirements, from classic navigation chart style, colour-coded terrain model through to multi-format point cloud data. In every case technical certainty is guaranteed.



## MARINE HEALTH & SAFETY

Investigator (MCA Category 3) and Polecat II (MCA Category 6) are both piloted by our in-house commercial skipper and certified RYA trainer; ensuring an uncompromised level of operational safety.

Our survey teams all undertake rigorous marine safety training in a challenging coastal environment. All surveyors are certified to RYA Powerboat Level 2 and qualified as 'STCW Proficiency Personal Survival Techniques' as a minimum.

