

# SURVEY VESSEL

# POLECAT II

# SURVEY WORK BOAT



**RAPID DEPLOYMENT** – Our nimble survey workboat, s.v. 'Polecat II', a Pioner Multi III, is road transportable, facilitating a quick response and rapid mobilisation. The vessel is highly versatile and manoeuvrable on the water owing to its lightweight but tough GPR hull design and generous load capacity. Its large open deck, drop-bow system, and bow A-frame make for easy deployment of many types of hydrographic equipment. It is superbly suited to inshore work, but also coded for up to 3 miles offshore.

## VESSEL SPECIFICATION

- **Type:** Pioner Multi III
- **LOA:** 5.3m
- **Beam:** 2.15m
- **Draft:** 0.3m
- **Propulsion:** Tohatsu 30Hp (4 Stroke)
- **Coding:** CA - Category 3 SCV
- **Mobilisation:** Road Trailer Towable



## SENSORS

s.v. 'Polecat II' is custom-fitted with:

- Deck mounting for Mosaic 51 high resolution panoramic inspection camera
- Over-the-side mounting for hydrographic sensor deployment incl.
  - Multibeam Echo-sounder (MBES) – NORBIT iWBMS
  - Single beam Echo-sounder (SBES) - various
  - Sub-bottom Profiler (SBP) – Innomar Compact+
  - Side-scan Sonar (SSS) – various



## MARINE HEALTH AND SAFETY

's.v. Polecat II' is inspected annually to meet the stringent safety requirements of its MCA Category 6 coding. It is fully equipped with riparian and coastal life-saving equipment and piloted by a highly qualified and experienced crew. Our survey teams all undertake rigorous marine safety training in a range of testing environments, are certified to RYA Powerboat Level 2 and RYA Marine First Aid at Work, and are practiced in man-overboard and emergency procedures.

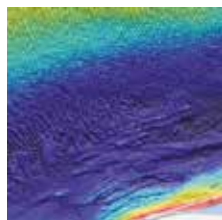
## APPLICATIONS



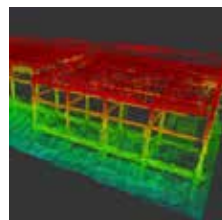
Environmental Survey & Sampling



Marine Asset Inspection



Bathymetric & Geophysical Survey



Underwater 3D Modelling



ROV Survey