

HYDROGRAPHIC SURVEY



LandScope Engineering specialises in high order inshore and nearshore hydrographic surveys. The combination of our experienced team of surveyors, a versatile fleet of survey vessels, and the latest survey equipment ensures that programmes are designed for maximum efficiency whilst not compromising on data quality or personnel safety.

BATHYMETRY

High accuracy and high-resolution bathymetric surveys provides the foundation of our hydrographic services. Our survey procedures have been developed from the International Hydrographic Organisation (IHO) standards and best practice to ensure technical certainty in all environments.



MARINE GEOPHYSICS

LandScope benefits from in-house geophysicists with diverse national and international experience in both land and marine geophysics to advise on the best design for your project.

Bed Classification & Mapping

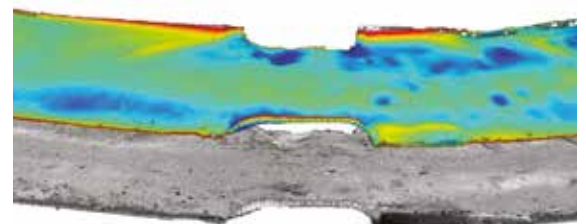
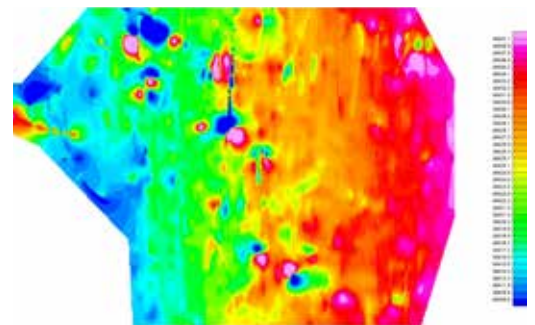
- Multibeam Back-Scatter
- Side-Scan Sonar
- Visual Inspection - ROV/Camera systems
- Sediment Sampling

Geomorphology & Geology

- Sub-Bottom Profiling
- Piston Coring

Marine Magnetometry

- UXO location
- Archaeology - location of sunken vessels and structures
- Geological studies



ENVIRONMENTAL SURVEY

In collaboration with specialist environmental partners and laboratories, we offer an array of sediment sampling and testing services to complement our hydrographic portfolio.



SURVEY PLATFORMS

At LandScope, we offer hydrographic services in all environments. We have configured a range of survey platforms, including unmanned remotely controlled vessels, to accommodate even the most constrained, inaccessible, and challenging survey sites.



MARINE HEALTH & SAFETY

Investigator (MCA Category 3) and Polecat II (MCA Category 6) are both piloted by our in-house commercial skipper and certified RYA trainer; ensuring an uncompromised level of operational safety.

Our survey teams all undertake rigorous marine safety training in a challenging coastal environment. All surveyors are certified to RYA Powerboat Level 2 and qualified as 'STCW Proficiency Personal Survival Techniques' as a minimum.

